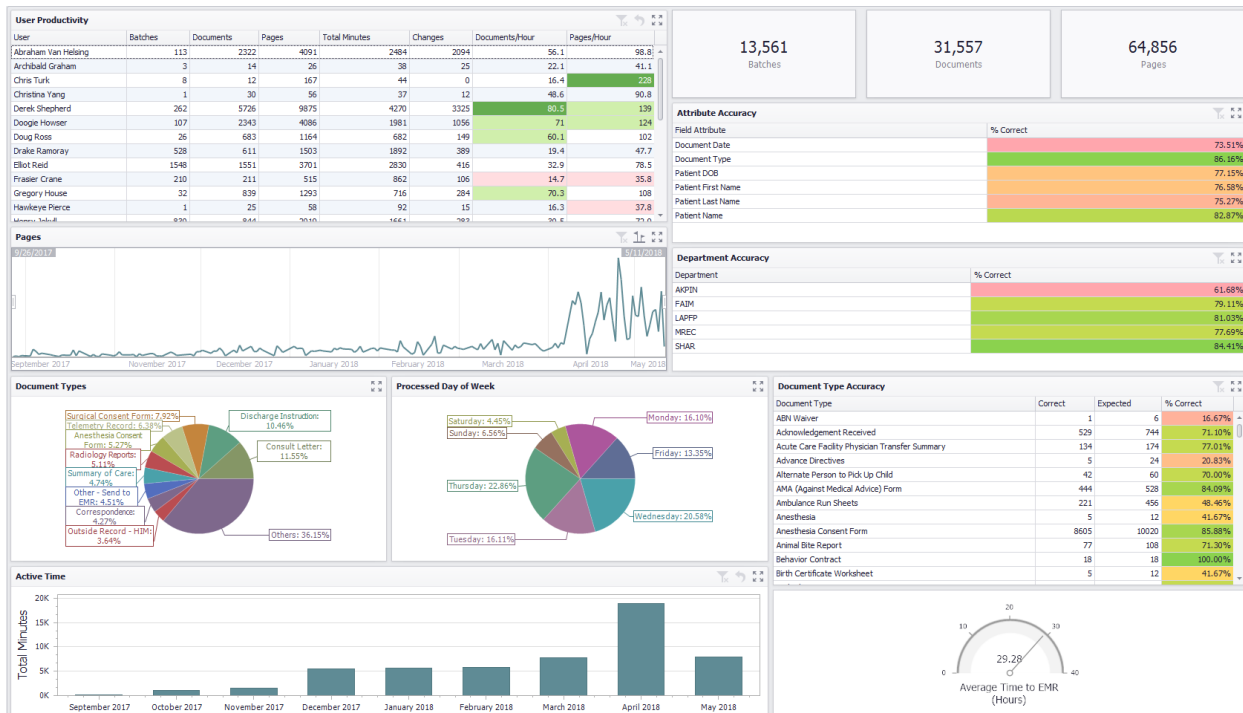


Analytics Dashboard

With the latest release of our software, version 11.0, Extract has released a new analytics dashboard that is both dynamic and customizable. Users can drill-down into individual pieces of information or set up filters without the need to run separate reports. With this new dashboard, you have the ability to navigate directly to individual files to see the source of the data.



The above screenshot is just one example of how the dashboard can be configured. Different modules can be added or removed to give you the exact look into your data that you'd like.

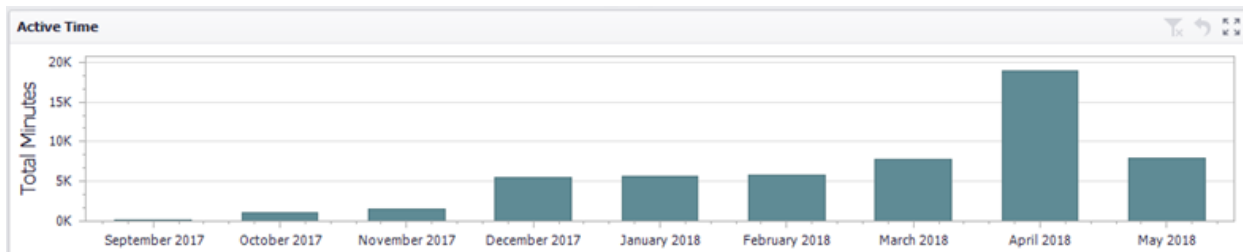
The following pages give examples of the different elements that can be placed in your dashboard.

Productivity Statistics

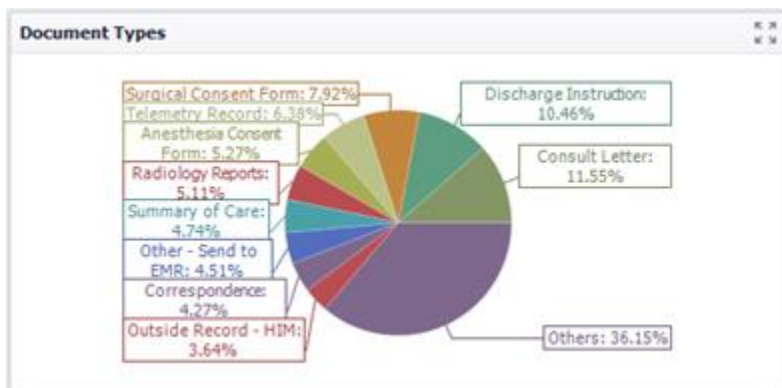
User Productivity

User	Batches	Documents	Pages	Total Minutes	Changes	Documents/Hour	Pages/Hour
Abraham Van Helsing	113	2322	4091	2484	2094	56.1	98.8
Archibald Graham	3	14	26	38	25	22.1	41.1
Chris Turk	8	12	167	44	0	16.4	228
Christina Yang	1	30	56	37	12	48.6	90.8
Derek Shepherd	262	5726	9875	4270	3325	80.5	139
Doogie Howser	107	2343	4086	1981	1056	71	124
Doug Ross	26	683	1164	682	149	60.1	102
Drake Ramoray	528	611	1503	1892	389	19.4	47.7
Elliot Reid	1548	1551	3701	2830	416	32.9	78.5
Frasier Crane	210	211	515	862	106	14.7	35.8
Gregory House	32	839	1293	716	284	70.3	108
Hawkeye Pierce	1	25	58	92	15	16.3	37.8
Moses Talbot	820	844	2010	1661	782	30.5	72.0

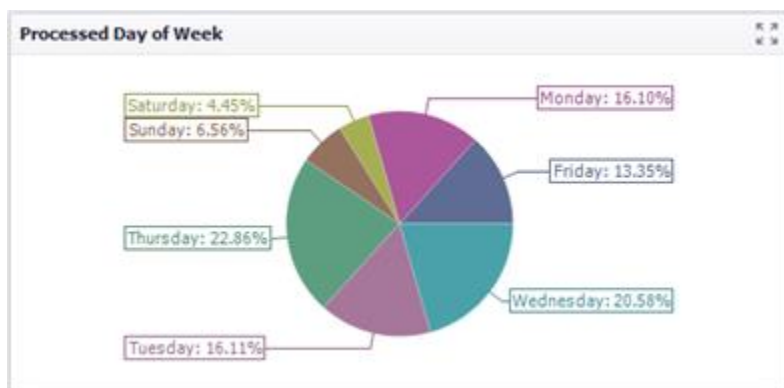
Active Time Spent



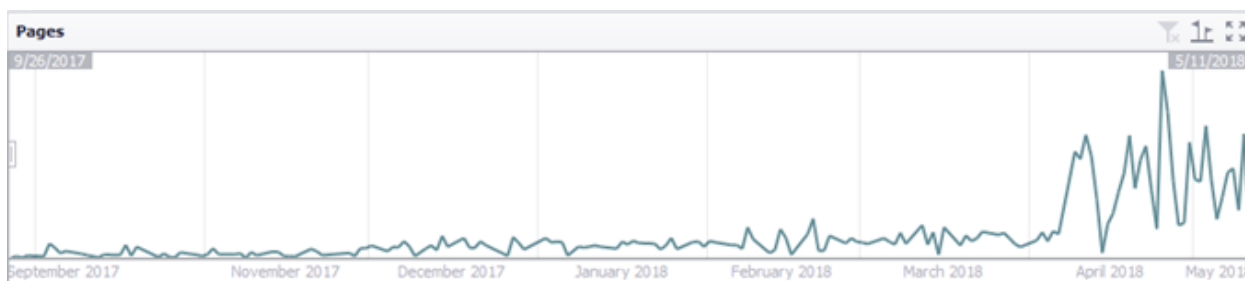
Processed by Document Type



Processed by Day of Week

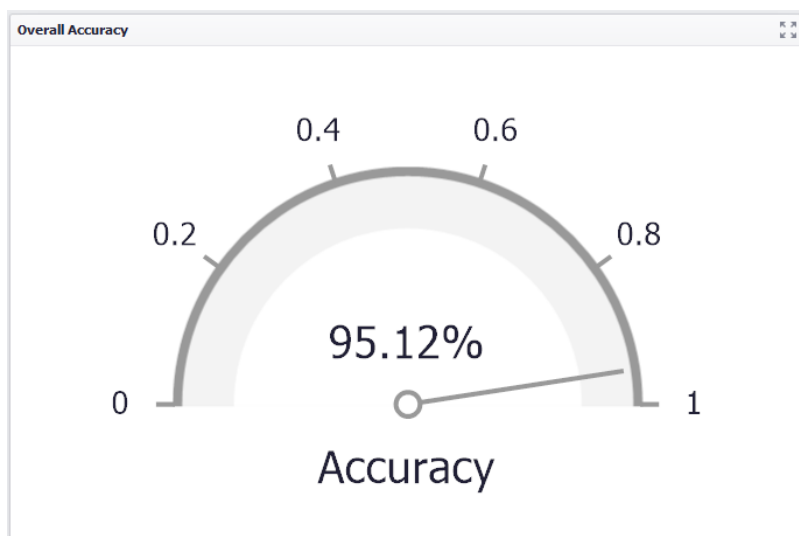


Page Count



Accuracy Rates

Overall Accuracy



Attribute Accuracy

Attribute Accuracy		
Field Attribute	% Correct	
Document Date		73.51%
Document Type		86.16%
Patient DOB		77.15%
Patient First Name		76.58%
Patient Last Name		75.27%
Patient Name		82.87%

Department Accuracy

Department Accuracy		
Department	% Correct	
AKPIN		61.68%
FAIM		79.11%
LAPFP		81.03%
MREC		77.69%
SHAR		84.41%

Document Type Accuracy

Document Type Accuracy			
Document Type	Correct	Expected	% Correct
ABN Waiver	1	6	16.67%
Acknowledgement Received	529	744	71.10%
Acute Care Facility Physician Transfer Summary	134	174	77.01%
Advance Directives	5	24	20.83%
Alternate Person to Pick Up Child	42	60	70.00%
AMA (Against Medical Advice) Form	444	528	84.09%
Ambulance Run Sheets	221	456	48.46%
Anesthesia	5	12	41.67%
Anesthesia Consent Form	8605	10020	85.88%
Animal Bite Report	77	108	71.30%
Behavior Contract	18	18	100.00%
Birth Certificate Worksheet	5	12	41.67%

Accuracy by Submitter

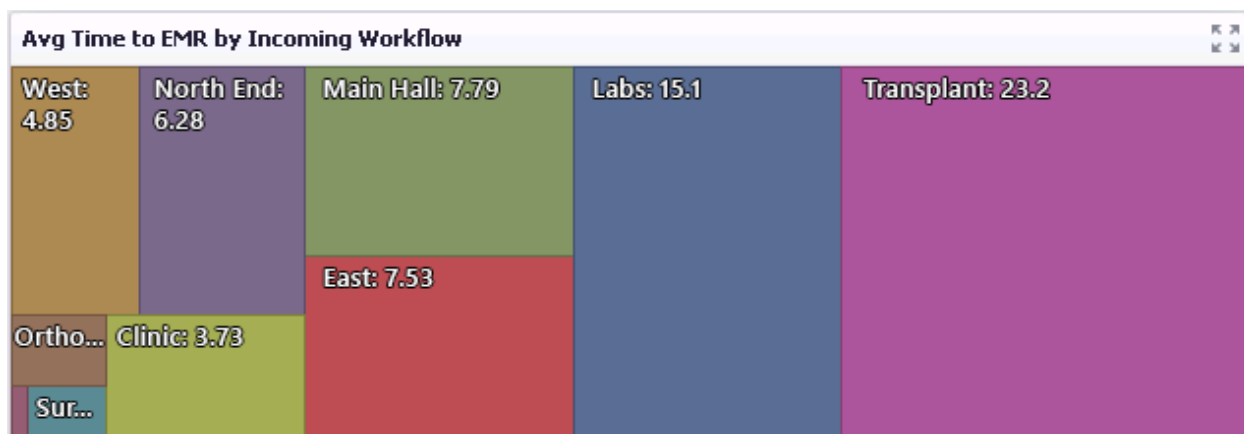
Laboratories		
Lab	Documen...	Accuracy
Quest Diagnostics-Tampa	281	94.38%
Cape Coral Hospital Clinical Laboratory	75	84.65%
Quest Diagnostics/Nichols Chantilly	70	94.00%
Sarasota Memorial Hospital	62	95.12%
LabCorp Burlington	53	92.11%
Quest Diagnostics-Clearwater	51	91.43%
LabCorp Tampa	45	90.77%
Florida Medical Clinic Cardiology	29	87.83%
International Medical Laboratory Inc	28	90.97%
Morton Plant Hospital	23	93.24%
Florida Medical Center Of Clearwater	22	93.82%
Watson Clinic LLP Main	21	93.89%
Oak Hill Hospital Clinical Laboratory	20	93.46%
Florida Hospital Laboratory	20	90.26%
Venice Regional Bayfront Health	19	89.08%
Martin Memorial Hospital South Clinical Laboratory	18	81.37%
C.W. Bill Young Dept of VAMC	18	72.31%
Tampa Community Hospital Clinical Laboratory	17	80.02%
James A. Haley Veterans Hospital	17	92.42%
Venice Womens Health Center	16	90.83%
Manatee Memorial Hospital Laboratory	14	92.82%

Miscellaneous

Document Names

Documents				
File Name	VOA	User	Page Count	Time to EMR (Hours)
\\extractsystems\Faxes\Processed\MICH Internal med_20180327134627.pdf.tif	voa	Elliot Reid	1	0.44
\\extractsystems\Faxes\Processed\MICH Internal med_20180327161415.pdf_Paginated ...	voa	Elliot Reid	2	16.19
\\extractsystems\Faxes\Processed\MICH Internal med_20180327225010.pdf.tif	voa	Elliot Reid	2	9.71
\\extractsystems\Faxes\Processed\MICH Internal med_20180328052040.pdf_Paginated ...	voa	Elliot Reid	3	3.18
\\extractsystems\Faxes\Processed\MICH Internal med_20180328052701.pdf_Paginated ...	voa	Elliot Reid	7	3.05
\\extractsystems\Faxes\Processed\MICH Internal med_20180328081900.pdf.tif	voa	Elliot Reid	1	0.32
\\extractsystems\Faxes\Processed\MICH Internal med_20180328090312.pdf_Paginated ...	voa	Elliot Reid	2	0.09
\\extractsystems\Faxes\Processed\MICH Internal med_20180328094853.pdf.tif	voa	Elliot Reid	2	0.19
\\extractsystems\Faxes\Processed\MICH Internal med_20180328101304.pdf_Paginated ...	voa	Elliot Reid	1	0.68
\\extractsystems\Faxes\Processed\MICH Internal med_20180328101543.pdf.tif	voa	Elliot Reid	1	0.15
\\extractsystems\Faxes\Processed\MICH Internal med_20180328104540.pdf.tif	voa	Elliot Reid	1	0.21

Time to EMR by Location



Time to EMR - Overall

