

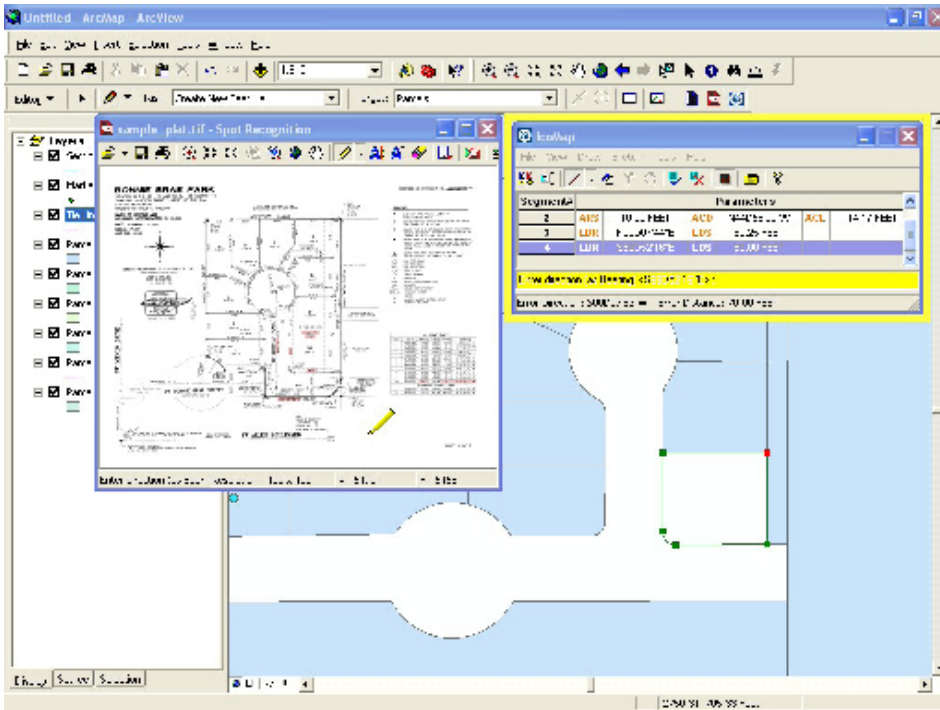


IcoMap™

Automated Mapping for ArcGIS®

VERSION 4.2 FEATURES AT-A-GLANCE

- Map long legals fast & easy using OCR tools
- Identify gaps and overlaps visually or in tabular format
- Advanced keyboard shortcuts and time-saving 10-key COGO functionality
- Comprehensive curve tools with preset curves and curve creation tool
- Handles multiple distance units (feet, inches, rods, chains, metric)
- Ability to draw in reverse and toggle curve directions
- Dynamic Input Grid allows for editing on the fly in a spreadsheet style table



As Fast as Digitizing but with the Accuracy of COGO

IcoMap for ArcGIS is the most convenient and cost-effective way to create and maintain an accurate parcel layer in GIS. With IcoMap, ArcMap users can create line and polygon features in a geodatabase quickly and accurately – an average of 84% faster than other methods.

IcoMap's advanced OCR capabilities and mathematical content recognition (MCR™) allow bearing and distance data from scanned documents and maps to be quickly transferred to the mapping environment. This dramatically reduces the need for tedious hand-typed COGO routines and is remarkably accurate.

IcoMap Training

Extract Systems offers standard and customized onsite IcoMap training classes for government, title and individual users. Training is typically two days or three days at the customer's site. Individual training is also available at Extract System's corporate headquarters and training center in Madison, WI. Please visit the Support and Professional Services section of the website for more information or contact an account manager.



County Assessor/GIS Departments • Title Insurance
Survey and GIS Firms • Dramatically Improve Productivity
Building, Maintaining or Searching Parcel Maps

Extract Systems, LLC

6418 Normandy Lane, Suite 200
Madison, WI 53719
U.S.A.

Inquiries

Phone 877.778.2543
Fax 608.216.7960
<http://www.extractsystems.com>
sales@extractsystems.com



© 2009 Extract Systems LLC. All rights reserved. Published in the U.S.A.
Extract Systems, IcoMap and the Extract Systems logo are registered trademarks of Extract Systems in the U.S. and other countries. All other trademarks are the property of their respective owners.